



CURATOR FOR A DAY

Teachers' pack





Contents

Introduction

Old Royal Naval College	3
Greenwich timeline	4
Before the workshop	4
Curator for a Day workshop outline	5
Pre- and post-visit activities	5

Planning your visit

Map of the site with key locations	6
How to get to us	6
Coach information	7
Pre-visits and site opening times	7
Accessibility	7
Cancelling your visit	7

On the day

Meeting point	8
Behaviour	8
Running late	8
Facilities – lunch space, toilets, our shop	8

Health and safety

Risk assessment and supervision	9
In an emergency and first aid	9
Equipment and Insurance	9

Pre- and Post- Visit Activities

Selection of Worksheets and Ideas for Activities	10
--	----

Old Royal Naval College

The Old Royal Naval College is one of London's most famous riverside landmarks. The ORNC site has a rich a varied history stretching back over 500 years.

Greenwich Palace was a favourite residence of Henry VIII. Henry and his two daughters, Elizabeth I and Mary I, were all born at Greenwich Palace. It was also where Henry married two of his six wives; Catherine of Aragon and Anne of Cleves. Over the years Henry continued to add to the Palace, as his father had before him, adding a tiltyard for jousting, kennels, stables, tennis courts and the Greenwich armour workshop.



The magnificent 18th century buildings we see today were designed by Sir Christopher Wren as a refuge for old and injured sailors, known as the Royal Hospital for Seamen. The Hospital was commissioned by Queen Mary II, who sadly did not live to see its completion. The first Greenwich Pensioners arrived in 1705 and the Hospital remained open until 1869 when the number of naval conflicts, and therefore casualties, had declined.



In 1873 the buildings of the old Hospital became home to the newly formed Royal Naval College, where all aspects of naval science were taught. During World War II almost 27,000 officers, including 8,000 from the Women's' Royal Naval Service (WRNS), were trained at the college.

Today 1.3 million people visit the Old Royal Naval College each year to explore the buildings and the site's unique history. The Old Royal Naval College is also home to the University of Greenwich and Trinity College of Music and hosts a variety of concerts, filming and events.



Greenwich timeline

- 1491** Future King Henry VIII born at Greenwich.
- 1498** Henry VII builds Greenwich Palace.
- 1509** Henry VIII marries Catherine of Aragon.
- 1662** Work starts to replace the old Palace with a new 'King's House'.
- 1675** Building works starts on Flamsteed House, the original Royal Observatory at Greenwich.
- 1694** Most of Greenwich Palace is demolished. Work starts on the Royal Hospital for Seamen.
- 1705** First Greenwich Pensioners arrive at Greenwich Hospital.
- 1751** Building work on the hospital finally completed.
- 1838** The London and Greenwich Railway, the world's first suburban railway, reaches Greenwich.
- 1869** Greenwich Hospital closes.
- 1873** Royal Naval College opens.
- 1902** The foot tunnel under the River Thames opens, linking Greenwich with the Isle of Dogs.
- 1936** National Maritime Museum opens.
- 1939** World War II starts.
- 1997** Navy departs from the Old Royal Naval College buildings.
- 1997** Greenwich becomes a World Heritage Site.
- 1998** The Old Royal Naval College opens to the public.
- 1998** University of Greenwich moves into the buildings of the Old Royal Naval College.
- 2001** Trinity College of Music moves into King Charles Court.
- 2010** Discover Greenwich Visitor Centre opens.



Before the workshop

Before the workshop, you may wish to discuss the following with your class:

- Why do people visit museums?
- What can an object tell us about the past? What can we learn?
- What do they already know about what has been here in the past?
- Why do people from all over the world come to Greenwich today?

Either before or after the workshop, you may wish to walk your class through the foot tunnel to the north side of the river or up to the General Wolfe statue at the top of the hill in Greenwich Park to see contrasting views of Greenwich.



Curator for a Day workshop outline

1 hour 30 mins

In this hands-on evidence based session led by a member of the ORNC learning team, Children will be given the chance to curate their own display, deciding which items they would include to tell the story of the Old Royal Naval College.

Aims and objectives

To engage pupils with the history of the world famous Old Royal Naval College and Maritime Greenwich World Heritage sites through a range of learning styles. To explore what makes Greenwich so important and how it has changed over time using a variety of evidence and teamwork.



Structure

In the first part of the workshop pupils explore the Visitor Centre permanent exhibition, gathering information to gain an overview of the history of the site through hands-on and interactive displays.

The second part of the session uses a variety of evidence – maps, images and objects – to investigate how Greenwich has changed and how this change was affected by the people who lived and worked here. Pupils work in teams to select their artefacts for their display.



Curriculum links

History; Geography; Literacy.

Pre- and post-visit activities

Some ideas for pre- and post- visit activities are included in this pack to help you prepare your class for their visit.

Planning your visit



How to get to us

By Docklands Light Railway: From Bank, Tower Gateway, Stratford, Beckton, Woolwich and Lewisham to Cutty Sark for Maritime Greenwich.

By London Underground: Take the Jubilee Line to Canary Wharf or Heron Quays and change to the Docklands Light Railway.

By Rail: From Cannon Street to Greenwich.

By River: Greenwich is just four miles downstream from Tower Bridge. Regular riverboat services are now available from Westminster, Embankment and Tower Piers to Greenwich. Thames Clipper run an express service with a boat every 20 minutes.

By Car: From the M25 via the A2 or M11/A12 Blackwall Tunnel. Car parking Park Row and Cutty Sark Gardens.

By Bus: Buses 129, 180, 177, 188, 286 and 199 pass near the Old Royal Naval College.



Coach information

Coaches are not permitted to drop off or park on site. Please use either the public car park along Park Row at the east end of the site, or the bus stop along King William Walk at the west end of the site, to drop off and pick up. Please note that King William Walk is a very busy stretch of pavement.

See below for Greenwich coach parking. Contact Greenwich Tourist Information on **0870 608 2000** for more information.

[Greenwich \(Stockwell Street, Greenwich, SE10 9JN\)](#)

5 bays. **Free**, max stay 20 mins (no return within 1 hour) Operational, 0900 - 1700 Mon-Sat, 0900 - 1800 Sun.

[Greenwich \(Norman Road, Greenwich, SE10 9QB\)](#)

3 bays. **Free**. Check local signs for operational hours and details.

[Greenwich Park \(Charlton Way, Blackheath, SE3\)](#)

Free, max stay 4 hours. Check local signs for operational hours.

[Greenwich \(Park Row/ Romney Road, Greenwich, SE10 9NL\)](#)

1 bay. Paid. Check local signs for operational hours and details.



Pre-visits

If you would like to arrange a pre-visit with a member of the learning team please contact us on **020 8269 4725** or email learning@ornc.org

If you would like to carry out a pre-visit independently, Discover Greenwich, the Painted Hall and Chapel are open daily from 10am to 5pm.

Accessibility

If you or your class have any accessibility needs or requirements please inform the learning team so any necessary preparations can be made for you where possible.

You may also wish to view the [Plan Your Visit](#) section of our website.

Cancelling your visit

If you need to cancel or rearrange your visit please contact the learning team on **020 8269 4725** as soon as possible.

On the day

Meeting point

On the day please bring your class/es to the Visitor Centre.

You may find it helpful to print a copy of the site map in the Planning Your Visit section of this pack.

Behaviour

Adults accompanying students are responsible for the behaviour of the group at all times, particularly in the Visitor Centre or when undertaking a self-led trail of the site. Please brief the students before their visit on how they are expected to behave. Please emphasise that we share this site with many other members of the public.

Running late

If you are running late please contact the learning team on **020 8269 4725**.

Facilities

Clore Learning Centre

Our Clore Learning Centre opened in March 2010 with generous support from the Clore Duffield Foundation. It is a light, airy and flexible learning space and is fully accessible by lift.

'One of the best
workshop
spaces we've
seen.'

Lunch space

You can book a lunch space with us, or if the weather is nice you may wish to sit out in the beautiful grounds of the Old Royal Naval College.

Toilets

There are public toilets located in the undercrofts beneath the Chapel and in the Visitor Centre.

You may wish to bring both male and female members of staff or adult helpers to accompany pupils to the toilet.



Health and safety

Risk assessment

We carry out risk assessments on all our activities. Our risk assessments show that our activities present a very low risk to participants. If you would like help with your risk assessment and planning your visit please contact us. We are happy to arrange pre-visits to the site.

Supervision

All school groups visiting the site must be supervised at all times, including lunchtimes. The minimum ratios must be maintained at all times.

For Key Stage 1 visits a minimum ratio of **1 adult per 6 students** must be maintained.
For Key Stage 2 visits a minimum ratio of **1 adult per 8 students** must be maintained.
For Key Stage 3 and 4 visits a minimum ration of **1 adult per 10 students** must be maintained.

In an emergency

In an emergency please follow the instructions given to you by the member of the learning team leading the workshop. If you are doing a self-led exploration of the site, please follow any instructions given to you by members of the Old Royal Naval College staff.

First Aid

Some members of the Old Royal Naval College staff are trained in first aid, however we cannot always guarantee a first aider will be available. Please refer to your school policy regarding a school first aider accompanying your visit.

Equipment

All equipment provided by the Old Royal Naval College has been risk assessed and presents a very low risk of accident.

Insurance

The Old Royal Naval College has public liability insurance. If you need further details please contact us

Pre-visit activities

Looking at images

Images could be printed out or shown on the whiteboard.

a) Using one of the historic images discuss what the people might be doing, thinking, feeling, what can they hear, smell and what they can see behind the painter/photographer. You could do this as a class discussion or by adding thought bubbles onto the images.

b) Look at the images of Greenwich past and present and discuss the similarities and differences as a class. Ask pupils to answer the questions.

Post-visit activities

Literacy and ICT

Write a tourist leaflet about the Old Royal Naval College. Pupils could include the history of the site, the buildings and their uses and what visitors can do here today.*

History

Create a timeline to show how Greenwich has changed and the people who have affected this change. This could be done individually, in groups or as a whole class.*

Art and Design

Create a visual timeline to show how Greenwich/your local area has changed, or create a futuristic image to show what Greenwich/your local area might look like in 200 years.*

Geography

Research another World Heritage Site from the UK or around the world to investigate and create a profile. For a list of UNESCO World Heritage Sites visit – <http://whc.unesco.org/en/list>

Geography

Use images and maps of your local area to see how it has changed over time. You could source these from a local heritage centre or library.

Drama

In groups devise and act out short scenes from the history the site using an image as inspiration. Different groups could work on separate periods of time, to be combined into one performance of the history of the Old Royal Naval College site.*

**You can use the workshop worksheets and the fact sheets in this pack for ideas.*

Useful websites

www.ornc.org – For more information on the Old Royal Naval College

<http://whc.unesco.org/en/list> – For a list of UNESCO World Heritage Sites

<http://www.historypin.com> – For online local history images

The Old Royal Naval College is not responsible for the content of these websites



Image 1: Greenwich Hospital from the North Bank of the Thames, Canaletto, 1752. © National Maritime Museum, Greenwich.



Image 2: View of the Old Royal Naval College today. © James Brittain.

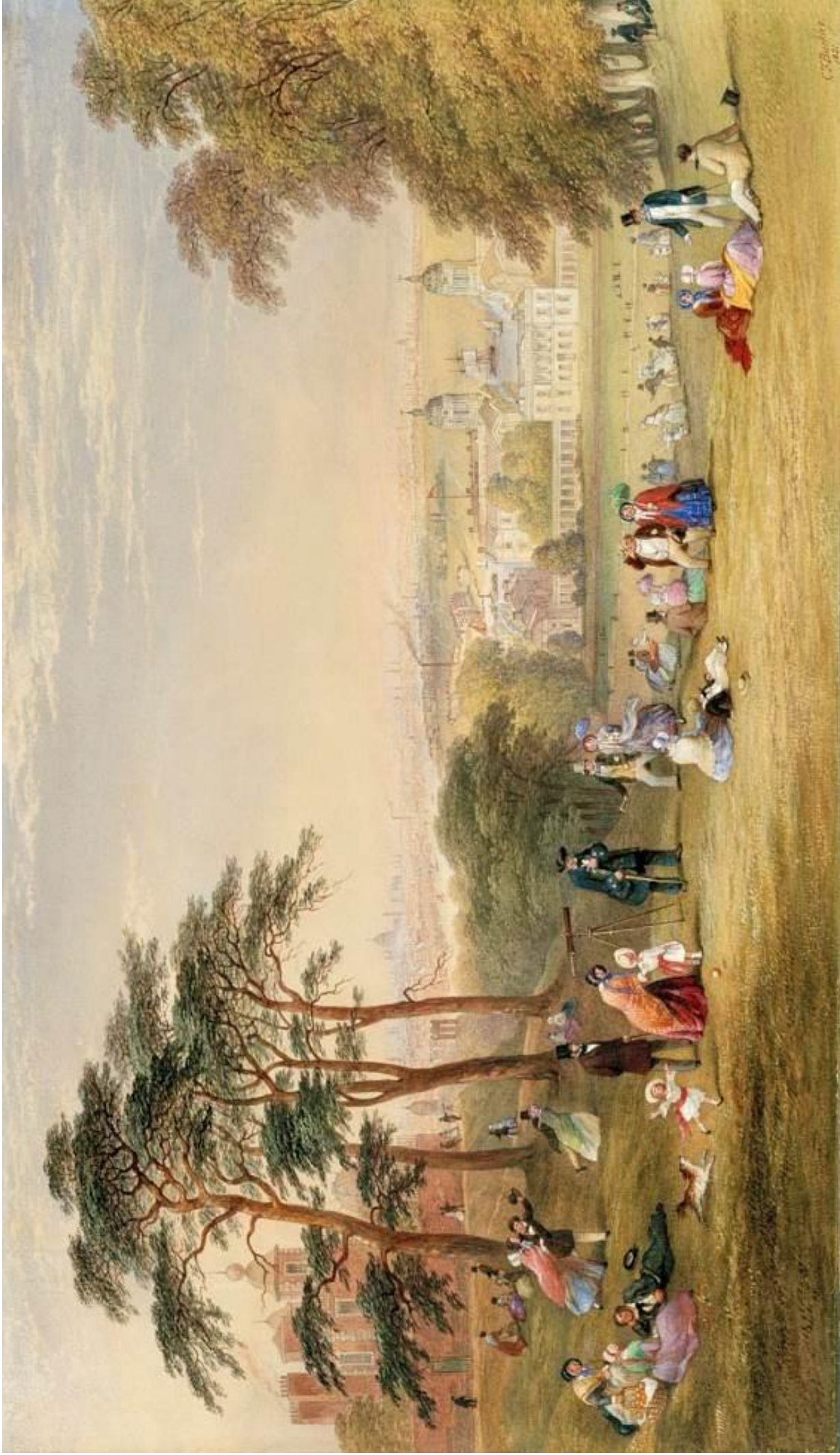


Image 3: London from Greenwich Hill, C. F. Buckley, 1851. © Warwick Ledyay Gallery.

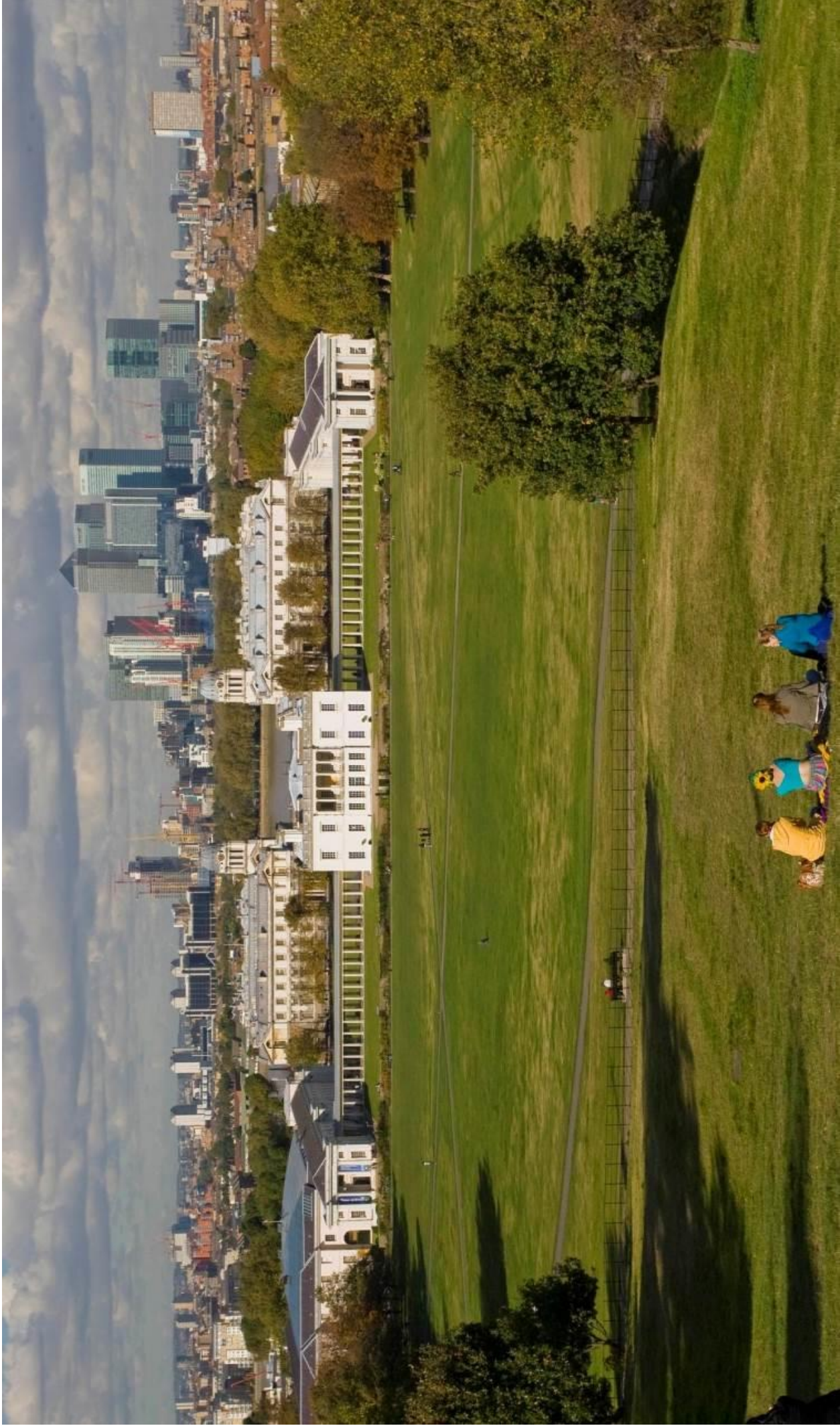


Image 4: Greenwich today from the top of the hill in Greenwich Park.

Greenwich past and present

Activity one

Look at the images *Greenwich Hospital from the North Bank of the Thames (1752)* and the same viewpoint today (images 1 and 2.)

1. Where is the painter/photographer standing?

2. Name one similarity between the images.

3. Name one difference between the images.

4. Why do you think there are so many boats on the river in the old picture? _____
picture? _____



Activity two

Look at the images *London from Greenwich Hill (1851)* and the same viewpoint today (images 3 and 4).

1. Name two activities that people are doing in *London from Greenwich Hill (1851)*.

a) _____

b) _____

2. How can you tell people are living in Victorian London?

3. Name one similarity between the images.

4. Name one difference between the images.



Greenwich and the Tudors 1400-1700

Key dates

- 1491** Henry VIII born at the Palace of Placentia.
- 1501** Henry VII rebuilds Placentia and renames it Greenwich Palace.
- 1509** Henry VIII marries Catherine of Aragon.
- 1514** Henry builds a tiltyard for jousting.
- 1515** Greenwich armour workshop is founded.
- 1516** The future Mary I is born here.
- 1517** A great joust is held to entertain foreign ambassadors.
- 1525** While out hawking, Henry falls head first into a muddy ditch.
- 1527** The treaty of 'Eternal Peace' with France is signed, followed by a huge celebration.
- 1533** William Peto preaches a sermon against Henry's divorce in the Friary Church.
- 1533** Anne Boleyn's coat of arms replaces those of Katherine of Aragon in the Palace windows.
- 1533** The future Elizabeth I is born here.
- 1533** Anne Boleyn's coronation procession travels by river from Greenwich to the Tower of London.
- 1540** Henry VIII marries Anne of Cleves in the Royal Chapel.
- 1581** Sir Francis Drake knighted by Queen Elizabeth I at Deptford.
- 1587** Elizabeth signs death warrant of her cousin Mary, Queen of Scots.
- 1593** Grace O'Malley, a female pirate, travels to Greenwich to petition Queen Elizabeth I for a pardon.
- 1595** A new play by William Shakespeare, A Midsummer Night's Dream, is performed before Elizabeth I.



Greenwich Palace: fun facts

At Henry VIII's huge banquets, much of the food was produced just for show. They also served jellies in the shapes of animals and castles.

- In 1524, when jousting against his great friend Charles Brandon, Duke of Suffolk, Henry forgot to close his visor, and received a face full of splinters. Although this was wasn't as bad as when in 1536 he was thrown from his horse and lay unconscious for hours. He never jousting again.
- Henry VIII had three bedchambers at Greenwich. The first contained the grand state bed (not designed to be slept in), the next was where he actually slept and there was one further room that he occasionally shared with the Queen. The Queen's apartments were in a separate wing of the Palace.
- Lots of courtiers used to relieve themselves against the white walls of the palace courtyards. Consequently, red crucifixes were placed on certain walls to deter this activity, as it would have been blasphemous to urinate on this religious symbol.
- Towards the end of her reign, Elizabeth banned all mirrors from the Palace, possibly because she had black teeth from eating so much sugar, and the smallpox scars didn't help either.

The Royal Hospital for Seamen 1700-1850



Key dates

- 1675** Royal Observatory founded in Greenwich Park.
- 1694** Queen Mary II commissions Sir Christopher Wren to design the Royal Hospital for Seamen.
- 1705** First Greenwich Pensioners arrive at Greenwich Hospital.
- 1708** James Thornhill begins to decorate the Painted Hall.
- 1751** Building work on the hospital finally completed.
- 1795** 'Do all Englishmen have only one arm or one leg?' remarks George IV's future wife Princess Caroline of Brunswick, when she arrives at Greenwich.
- 1797** Admiral Horatio Nelson visits the Governor of Greenwich Hospital, while convalescing from the amputation of his right arm.
- 1799** The Chapel gutted by fire and rebuilt by James 'Athenian' Stuart.
- 1806** Nelson's body lies in state in the Painted Hall following his death at Trafalgar in 1805.
- 1814** 2,710 Pensioners – the highest number recorded.
- 1834** Vice-Admiral Sir Thomas Masterman Hardy becomes Governor of Greenwich Hospital. He is best known as Nelson's friend and commanded *Victory* at the Battle of Trafalgar.
- 1836** The London and Greenwich Railway, the world's first suburban railway, reaches Greenwich.

The Royal Hospital for Seamen: fun facts

- John Worley was one of the first Pensioners to be admitted in 1705. He had been at sea for 70 years and is mentioned twice in the records for drunkenness and disruptive behaviour.
- Pensioners often played cricket locally on Blackheath. In 1796 a famous match took place at Montpelier Gardens, Walworth, for a prize of £1,000. One team was made up of Pensioners with just one arm while the men in the other team had only one leg.
- Greenwich Pensioners were allowed four pints of beer a day, except on public holidays, when they got double rations.
- Sometimes Greenwich Pensioners had to wear a yellow coat as a punishment. As a Pensioner, you could be punished for swearing, fighting, gambling, not going to Chapel or, most often, for being drunk and disorderly.

The Royal Naval College 1850-1945

Key dates



- 1869** Greenwich Hospital closes.
- 1873** Royal Naval College opens.
- 1902** The foot tunnel under the River Thames opens, linking Greenwich with the Isle of Dogs.
- 1919** History and English departments created after World War I.
- 1933** The Greenwich Night Pageant is held with over 2,000 performers who recreated scenes from Greenwich's history.
- 1937** The National Maritime Museum is opened by King George VI.
- 1939** The restored Painted Hall is reinstated as the Officers' Mess.
- 1939** World War II starts.
- 1939** The outbreak of World War II in 1939 changed the College's main role to providing rapid training of 'hostilities only' officers with additional courses in cryptography, meteorology, navigation, air intelligence and current affairs.
- 1939** The first female students from the Women's Royal Naval Service (WRNS), commonly known as 'Wrens', were admitted to the College.
- 1942** Winston Churchill attended a dinner with US government personnel and Senior Naval staff.

The Royal Naval College: fun facts

- The Royal Naval College courses were demanding so it was important for students to have time off. A variety of sports was played, including squash (using the courts then in this building), hockey, cricket, croquet and tennis. Social activities included a thriving dramatic society, which staged numerous plays, billiards, Highland dancing and skittles in the Victorian skittle alley beneath Upper Grand Square.
- The Greenwich Night Pageant held in June 1933 was staged on an extraordinary scale. Masterminded by Admiral President Barry Domvile. It featured over 2,000 performers who recreated scenes from Greenwich's history such as Queen Elizabeth I knighting Sir Francis Drake and Nelson's funeral procession on the River Thames.
- During the blitz the clearance of debris from fire and bomb damage, for the most part minor, became a daily routine. During air raids students were confined to the cellars, where there were bunk beds.

The Royal Old Royal Naval College 1945 -today

Key dates

- 1954** Cutty Sark is moved into a dry dock at Greenwich.
- 1955** 150th anniversary of the Battle of Trafalgar is marked by a special dinner in the Painted Hall, which was attended by the Queen and the Duke of Edinburgh.
- 1997** Greenwich becomes a World Heritage Site.
- 1998** Navy departs from the Old Royal Naval College buildings.
- 1999** University of Greenwich moves into the buildings of the Old Royal Naval College.
- 2001** Trinity College of Music moves into King Charles Court.
- 2007** The Golden Compass starring Nicole Kidman filmed in the Painted Hall.
- 2009** Sherlock Holmes and Gulliver's Travels filmed on-site.
- 2010** Discover Greenwich Visitor Centre opens.
- 2010** Pirates of the Caribbean: On Stranger Tides filmed in the painted Hall and on-site.



The Royal Naval College: fun facts

- Millions of people visit Greenwich every year. 1.3 million people visited the Old Royal Naval College in 2010 and 12 million people visited the Greenwich World Heritage Site in 2010.
- Large-scale outdoor events have included an ice rink in Grand Square, an observation wheel, the annual Greenwich Beer and Jazz Festival, Greenwich Comedy Festival and Greenwich + Docklands International Festival.
- Big-screen blockbusters shot in recent years include Four Weddings and a Funeral, The Mummy, Tomb Raider, National Treasure, The Queen, Amazing Grace, Starter for Ten, The Golden Compass, Sherlock Holmes and Gulliver.
- Famous stars who have featured here include Helen Mirren, Hugh Grant, Sharon Stone, Keira Knightley, Owen Wilson, Jackie Chan, Nicole Kidman, Angelina Jolie, Simon Callow, Rowan Atkinson, Billy Connelly and Jack Black.

World Heritage Site (WHS) profile

Name of World Heritage Site	
Where in the world is it	
Date of inscription (When was it made a WHS?)	
What's there? (list three of four different things that are part of the WHS)	<ul style="list-style-type: none">••••
Three interesting facts	<ul style="list-style-type: none">•••
Images of the WHS	



Model of the Old Greenwich Palace, Discover Greenwich.



The GREENWICH PENSIONER.

By McDIBDIN.

*'Twas in the good ship Rover,
I sail'd the World around,
And for three years and over,
I ne'er touch'd British ground:
At last in England land'd,
I left the roaring main,
Found all relations stranded,
And went to Sea again.*

*That time bound strait to Portugal,
Right fore and aft we bore;
But, when we made Cape Ortugal,
A gale blew off the shore,
She lay, so it did shock her,
A log upon the main,
Till saved from Davy's locker,
We put to Sea again.*

*Next in a Frigate sailing
Upon a squally night,
Thunder and lightening hailing
The horrors of the fight,
My precious limb was lepp'd off,
I when they'd eas'd my pain,
Thanked God I was not popp'd off,
And went to Sea again.*

*Yet still I am enabled
To bring up in life's rear,
Altho' I'm quite disabled,
And lie in Greenwich tier,
The King, God blefs his royalty,
Who saved me from the main,
I'll praise with love and loyalty,
But neer to Sea again.*

Published by N. Carpenter, & Spencer, in London.



Officers dining in the Painted hall.